

**MARCH 7, 2023
TOWN MEETING**



ARTICLE 6

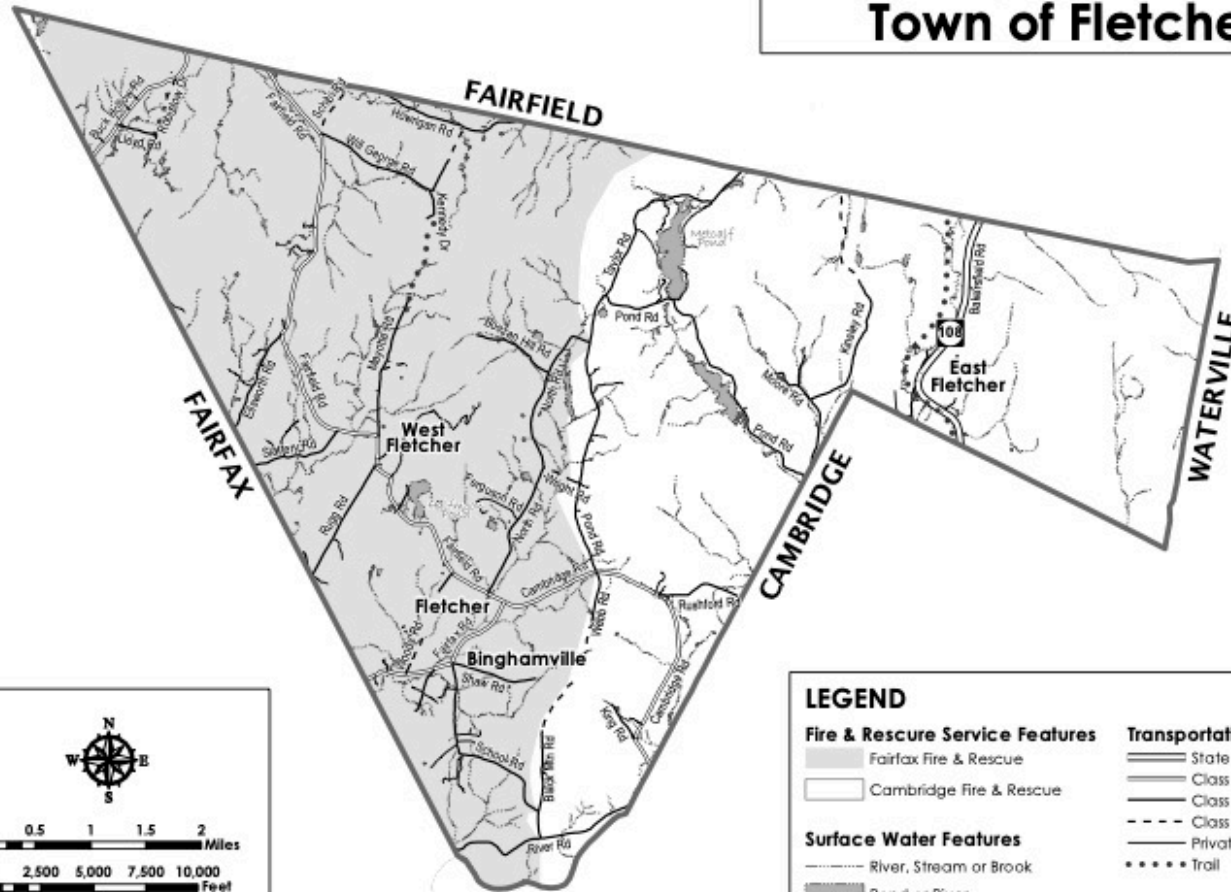
Outline of Presentation

- Article 6
- The Numbers
- Emergency Medical Service Coverage
- Regional Comparison of Rates
- Drive Time Analysis
- Staff & Equipment

Article 6

- Shall the voters approve replacing Cambridge Rescue Squad with Fairfax Rescue Squad for emergency medical service for the east side of Fletcher?

FIRE & RESCUE SERVICES Town of Fletcher



VT Coordinate System, Transverse Mercator, NAD 83,
for planning purposes only.

Location: z:\gis\project\county\
fletcher\fire\rescue-services-fletcher-bw.mxd

LEGEND

Fire & Rescue Service Features	Transportation Features
<ul style="list-style-type: none"> Fairfax Fire & Rescue Cambridge Fire & Rescue 	<ul style="list-style-type: none"> State Highway Class 2 Town Highway Class 3 Town Highway Class 4 Town Highway Private Road Trail
Surface Water Features	
<ul style="list-style-type: none"> River, Stream or Brook Pond or River 	
Boundary Feature	
 Town Boundary	

Prepared by:
Northwest RPC
75 Fairfield Street
St. Albans, VT 05478
(802) 524-5958
www.nrpcvt.com
October, 2022.

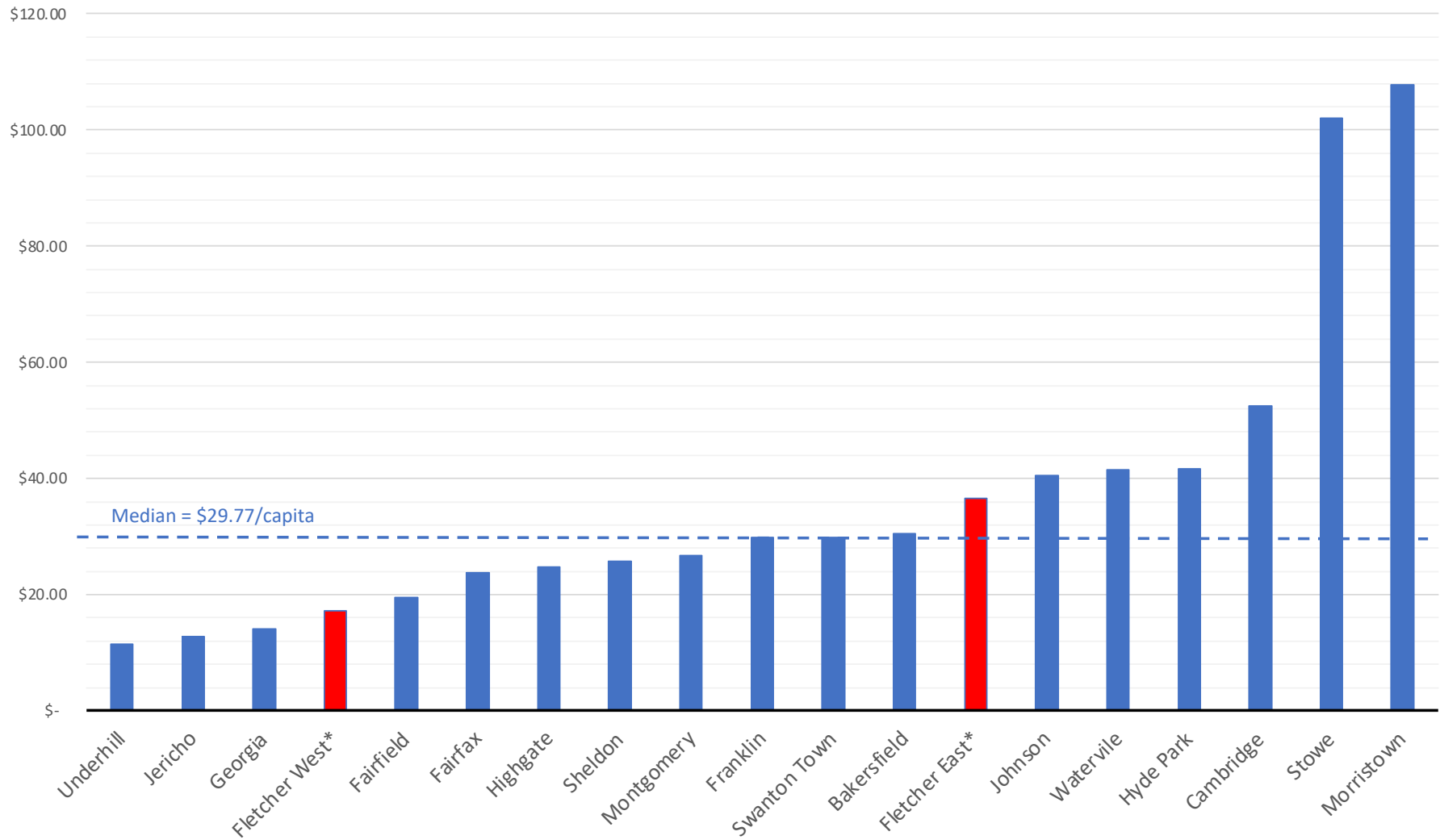
EMS Costs for Fletcher

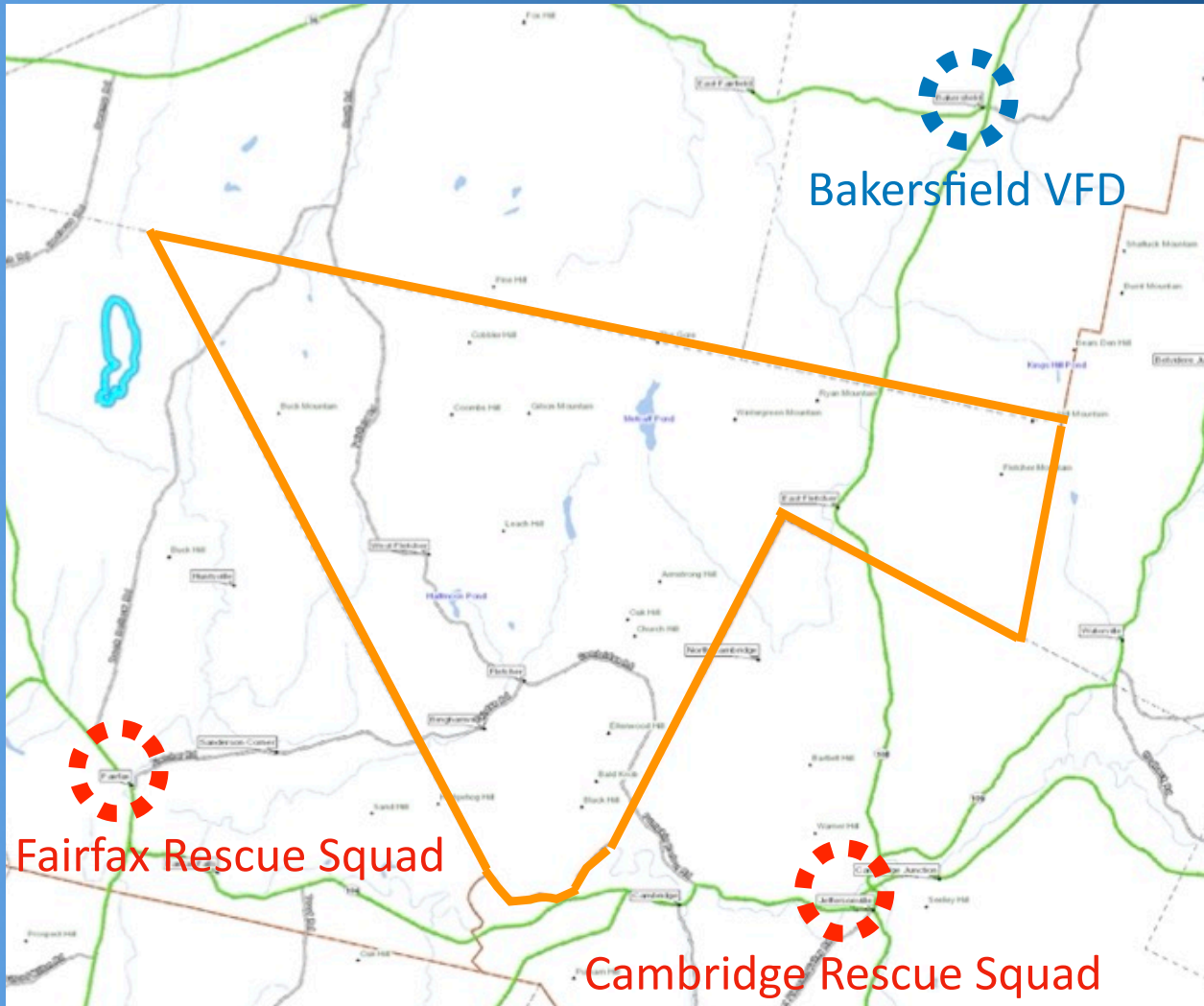
		FY22	FY23	FY24
Budgeted	Cambridge Rescue (East)	\$4,000	\$15,750	\$15,750
	Fairfax Rescue (West)	<u>\$18,043</u>	<u>\$15,750</u>	<u>\$18,043</u>
	Fairfax Rescue + Cambridge Rescue (Total)	\$22,043	\$31,500	\$33,793
Proposed, but not budgeted	Fairfax & Bakersfield First Response			\$20,500

Net cost savings with Fairfax Rescue covering all of Fletcher is: **\$13,293**

References : page 30, lines 135 & 136; and pages 37-39

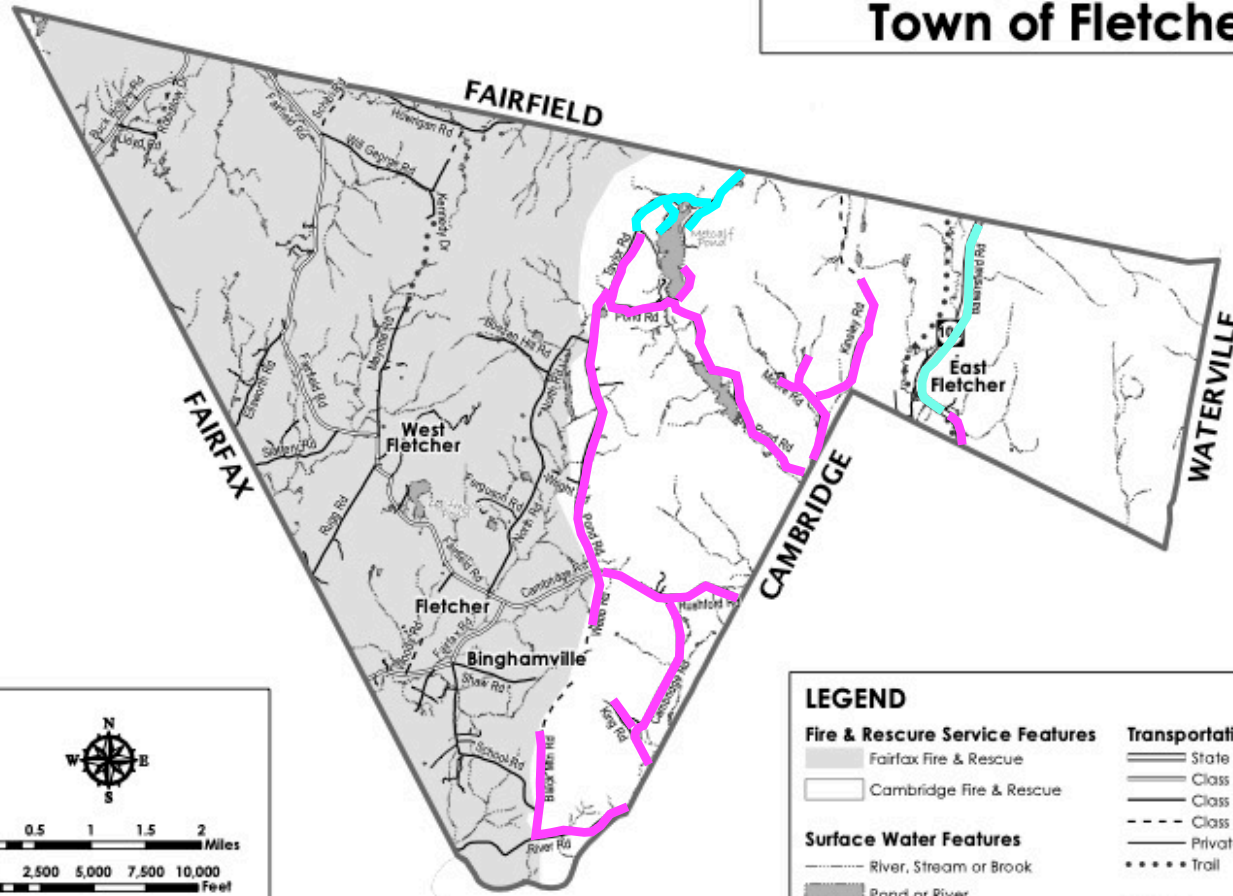
Figure 1. Emergency Medical Services Budgeted Cost Per Capita In Selected Franklin County Lamoille County and Chittenden County Towns (for FY22 based on 2021 Town Reports)






Bruce

FIRE & RESCUE SERVICES Town of Fletcher




 0 0.5 1 1.5 2 Miles
 0 2,500 5,000 7,500 10,000 Feet
 VT Coordinate System, Transverse Mercator, NAD 83,
 for planning purposes only.
 Location: z:\gis\projects\county\
 frankin\fl Fletcher\FireRescueServices-fletcher-bw.mxd

LEGEND

<p>Fire & Rescue Service Features</p> <ul style="list-style-type: none">  Fairfax Fire & Rescue  Cambridge Fire & Rescue <p>Surface Water Features</p> <ul style="list-style-type: none">  River, Stream or Brook  Pond or River <p>Boundary Feature</p> <ul style="list-style-type: none">  Town Boundary 	<p>Transportation Features</p> <ul style="list-style-type: none">  State Highway  Class 2 Town Highway  Class 3 Town Highway  Class 4 Town Highway  Private Road  Trail <p>  Prepared by: Northwest RPC 75 Fairfield Street St. Albans, VT 05478 (802) 524-5958 www.nrpcvt.com October, 2022. </p>
---	---

Comparison of Staff & Equipment

Resources	Fairfax Rescue	Bakersfield First Response	Cambridge Rescue
Current Service Areas	Fairfax, Westford, & 2/3 Fletcher	Bakersfield	Cambridge & 1/3 Fletcher
Paramedics, Emergency Medical Technicians and First Responders	37	7	16
Ambulances	2	-	2
First Response Vehicles	-	1	-

Implications of Change in EMS Providers

- Main Advantage
 - Lower Overall Cost
- Main Disadvantage
 - Longer ambulance/first response drive times in most of the eastern half of Fletcher

Questions and Discussion